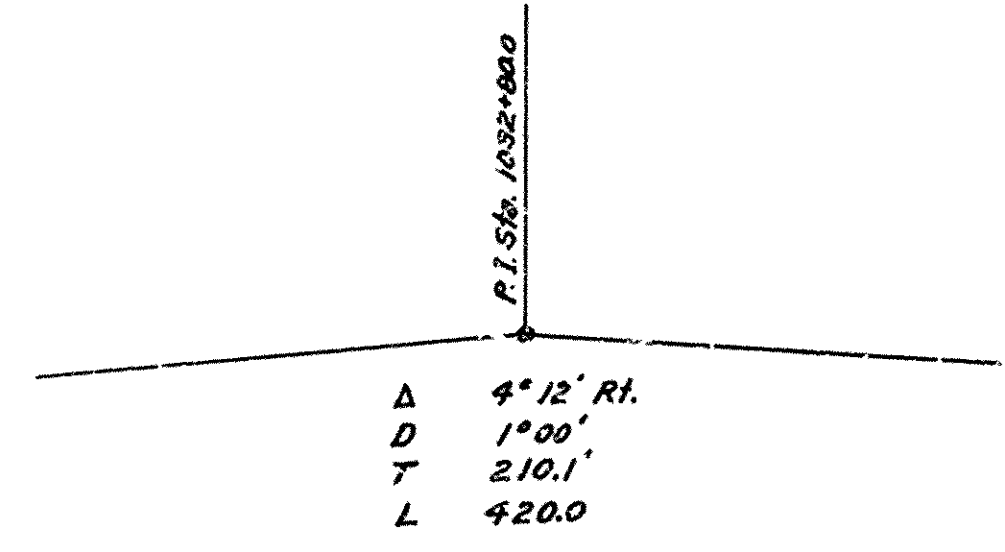
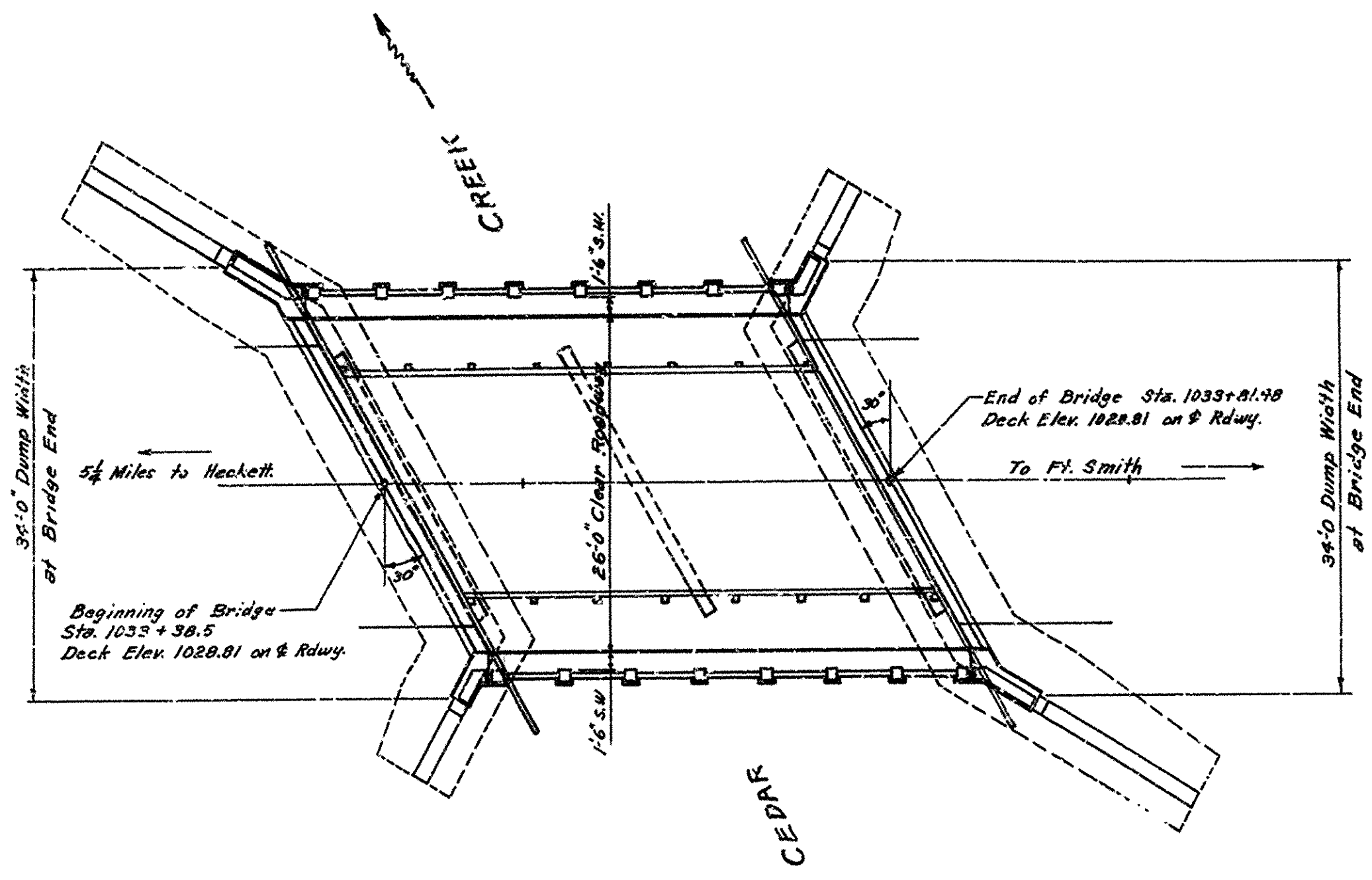


FED. ROAD DIST. NO.	STATE	PROJECT NO.	FISCAL YEAR	SHEET NO.	TOTAL SHEETS
6	ARK.			1	5
STATE JOB NO. 4266					



NOTE: Present bridge to be removed. It consists of 2 trussed steel spans @ 19', with 17' clear roadway, timber floor and handrails, and framed bents on concrete pedestals.

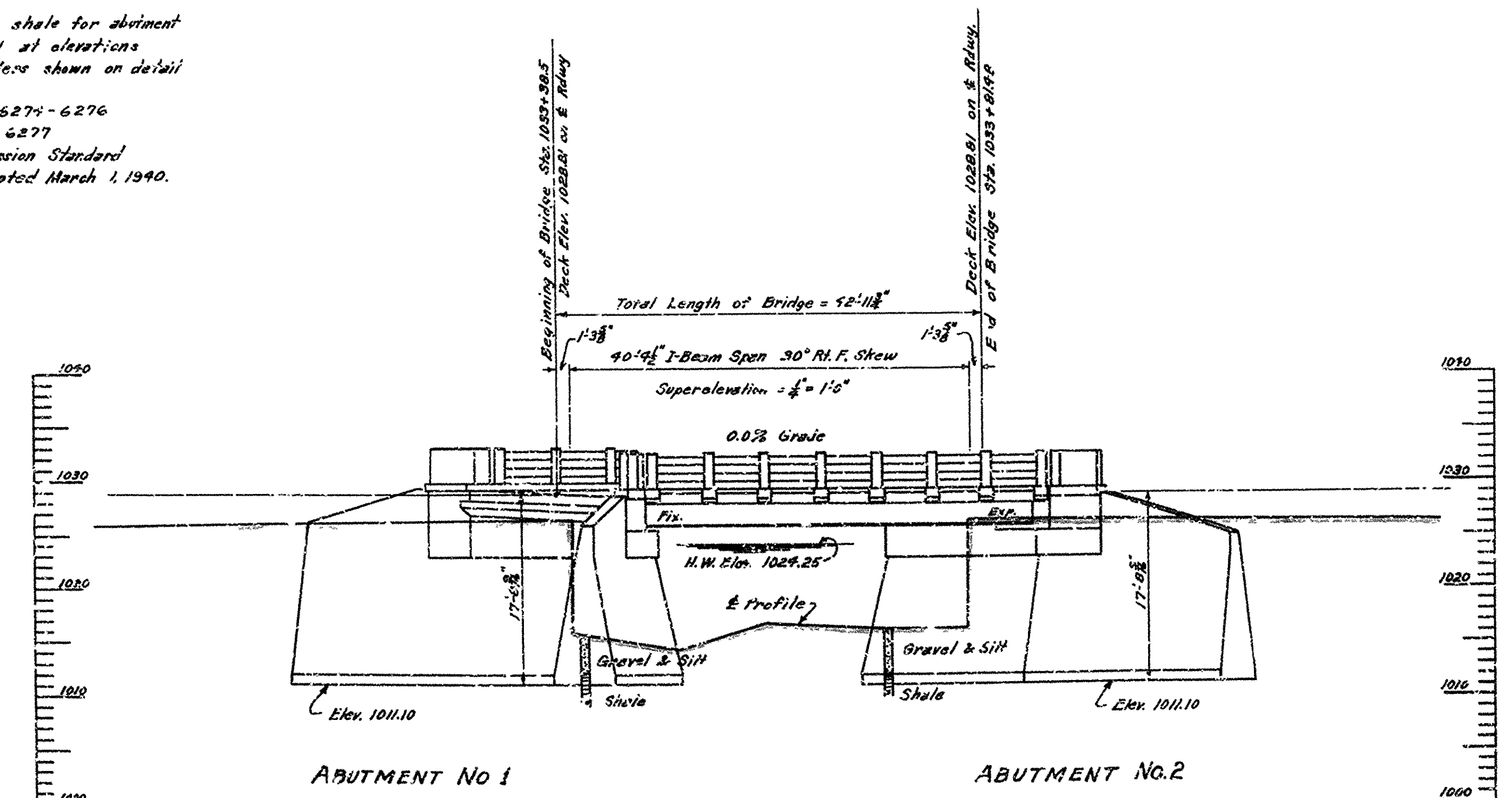


PLAN

NOTE: The bridge is to be constructed parallel to a 42° 11 1/2' chord thru the bridge ends.

GENERAL NOTES

All concrete to be poured in the dry. Exposed corners to be chamfered 3/4" unless otherwise noted.  
 Abutment caps and backwall to be Class "A" Concrete. Remainder of abutments to be Cement Rubble Masonry.  
 Excavate to least 1/2' into shale for abutment footings. If suitable foundation material is encountered at alterations other than that shown, construct abutments to batters shown on detail plans.  
 For details of Abutments see Drawings No. 6274-6276  
 For details of Superstructure see Drawing No. 6277  
 Specifications: Arkansas State Highway Commission Standard Specifications for Road and Bridge Construction, adopted March 1, 1940.



ELEVATION

QUANTITIES

ITEM NO.	ITEM	QUANTITY			UNIT
		ABUT. NO. 1	SPAN	ABUT. NO. 2	
102	Dry Excavation for Structures	206	—	206	412 Cu.Yd.
103	Wet Excavation for Structures	92	—	92	184 Cu.Yd.
103	Solid Rock Excavation Structures	21	—	21	42 Cu.Yd.
S.P.#802	Class "A" Concrete for Bridges	160	—	160	320 Cu.Yd.
S.P.#803	Class "S" Concrete for Bridges	—	279	—	279 Cu.Yd.
S.P.#808	Reinforcing Steel	1,640	2,330	1,610	10,620 Lb.
805	Concrete Paving	11	21	11	102 Lin.Ft.
S.P.#807	Structural Steel in Beam Spans (At Right Angles Skew)	—	18,040	—	18,040 Lb.
S.P.#807	Structural Steel in Beam Spans (New)	575	2,960	575	4,010 Lb.
509	Cement Rubble Masonry	162	—	161	323 Cu.Yd.

LAYOUT OF  
 BRIDGE OVER CEDAR CREEK  
 HACKETT-NORTH ROAD  
 SEBASTIAN COUNTY  
 ROUTE 45 SEC. 1

ARKANSAS STATE HIGHWAY COMMISSION  
 LITTLE ROCK, ARK.  
 Drawn By: E.S.S. Date: 11-22-41  
 Traced By: W.C.H. Date: 11-26-41  
 Checked By: \_\_\_\_\_ Date: \_\_\_\_\_  
 BRIDGE NO. 873-A DRAWING NO. 6273

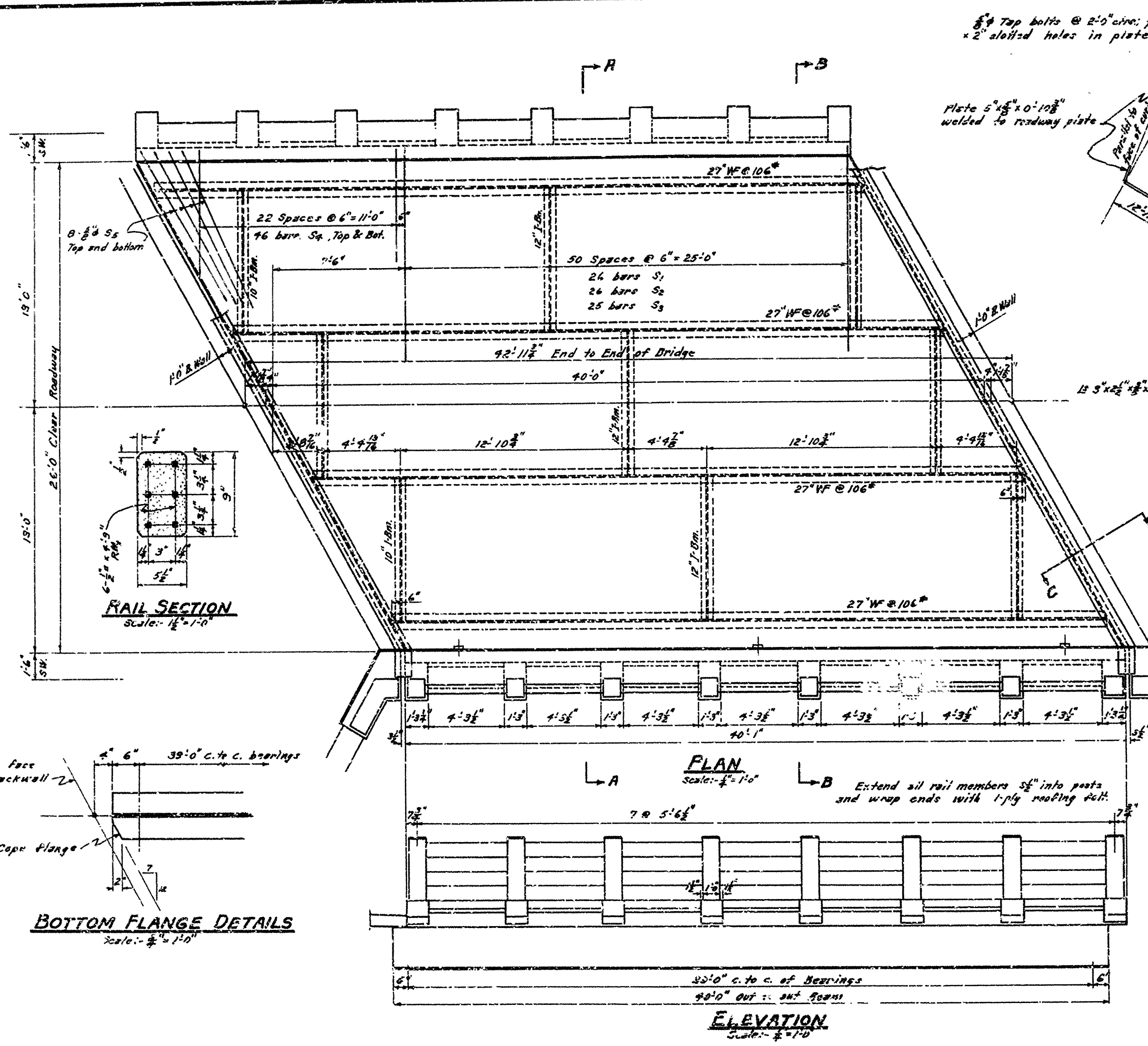
W.C.H. JAMES  
 PRINCIPAL HIGHWAY ENGINEER (DR-028)

S.M. Cop of R.W. Marker on Rt Sta. 885+34.9 Elev. 218.82

Drainage Area = 4.1 Sq. Mi. C = 0.8



FED. ROAD DIST. NO.	STATE	PROJECT NO.	FISCAL YEAR	SHEET NO.	TOTAL SHEETS
8	ARK.			5	5
STATE JOB NO. 4206					



MARK	SIZE	No. REQ'D	LENGTH	BENDING DIAGRAM
S <sub>1</sub>	5/8"	26	27'-10 1/2"	
S <sub>2</sub>	5/8"	26	29'-0"	
S <sub>3</sub>	5/8"	25	28'-7 1/2"	
S <sub>4</sub>	5/8"	9 of each length	Varies from 20'-0" to 7'-5 1/2"	
S <sub>5</sub>	5/8"	16	9'-7"	
S <sub>6</sub>	5/8"	104	5'-5"	
S <sub>7</sub>	5/8"	16	9'-5"	
S <sub>8</sub>	5/8"	16	9'-4"	
S <sub>8a</sub>	5/8"	16	9'-8"	
S <sub>9</sub>	5/8"	94	20'-9"	Straight

**GENERAL NOTES**

All concrete shall be Class A. All exposed corners shall be chamfered 3/4" unless otherwise noted.

Design Load = H-15. Design Specifications 1941 A.S.H.O. Allowance has been made for a future wearing surface of 6.25% of roadway surface.

All connections shall be 3/4" rivets, unless otherwise noted. 3/4" open holes to compensate for dead load deflection the slab shall be thickened 1/2" at 1/4" of span and 3/4" at quarter points of span.

Shop Paint: One coat of red lead and raw linseed oil. Field Paint: First coat, white lead; second coat, white lead tinted with lamp black.

Construction Specifications: Arkansas State Highway Commission Standard Specifications for Road and Bridge Construction, adopted March 1, 1940.

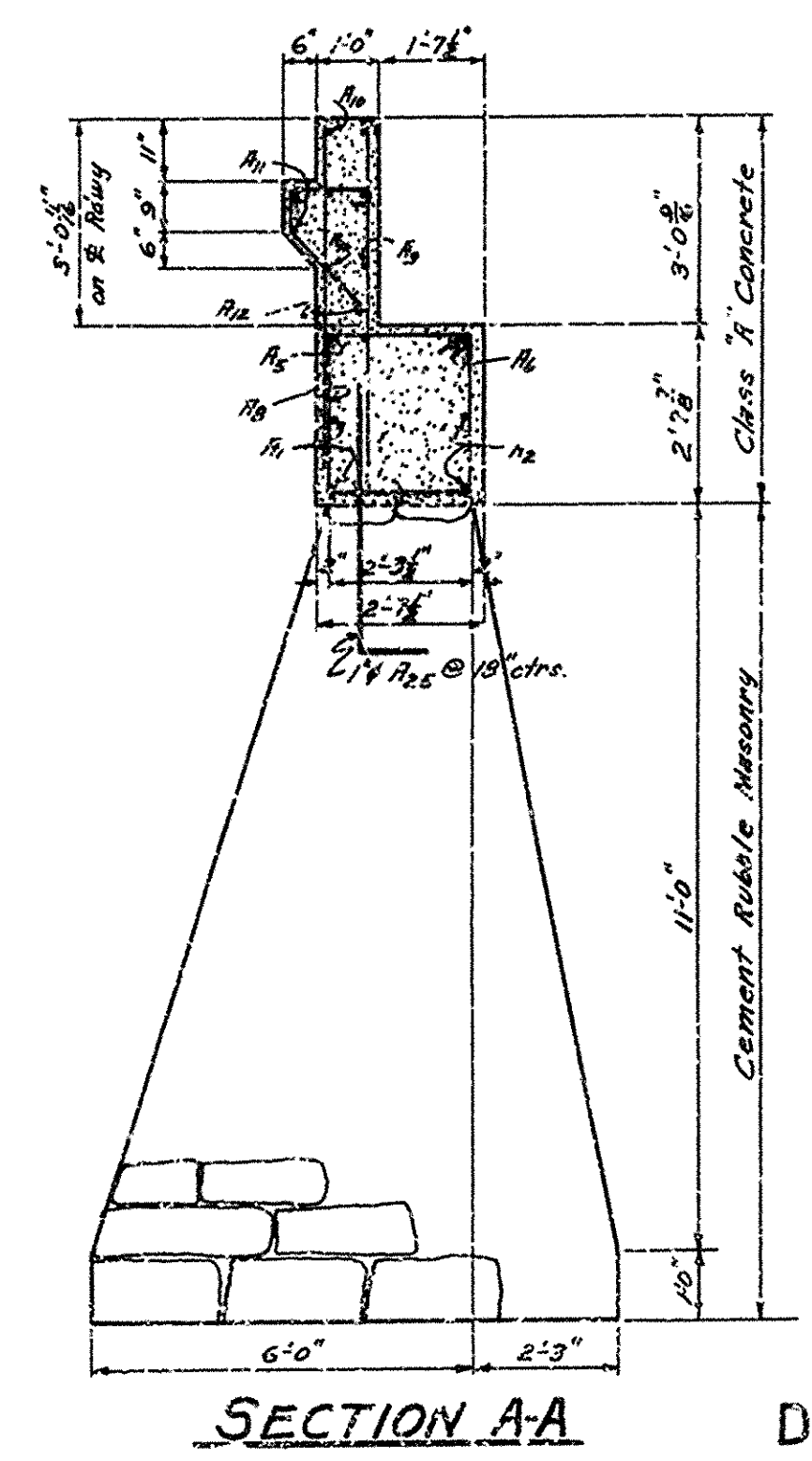
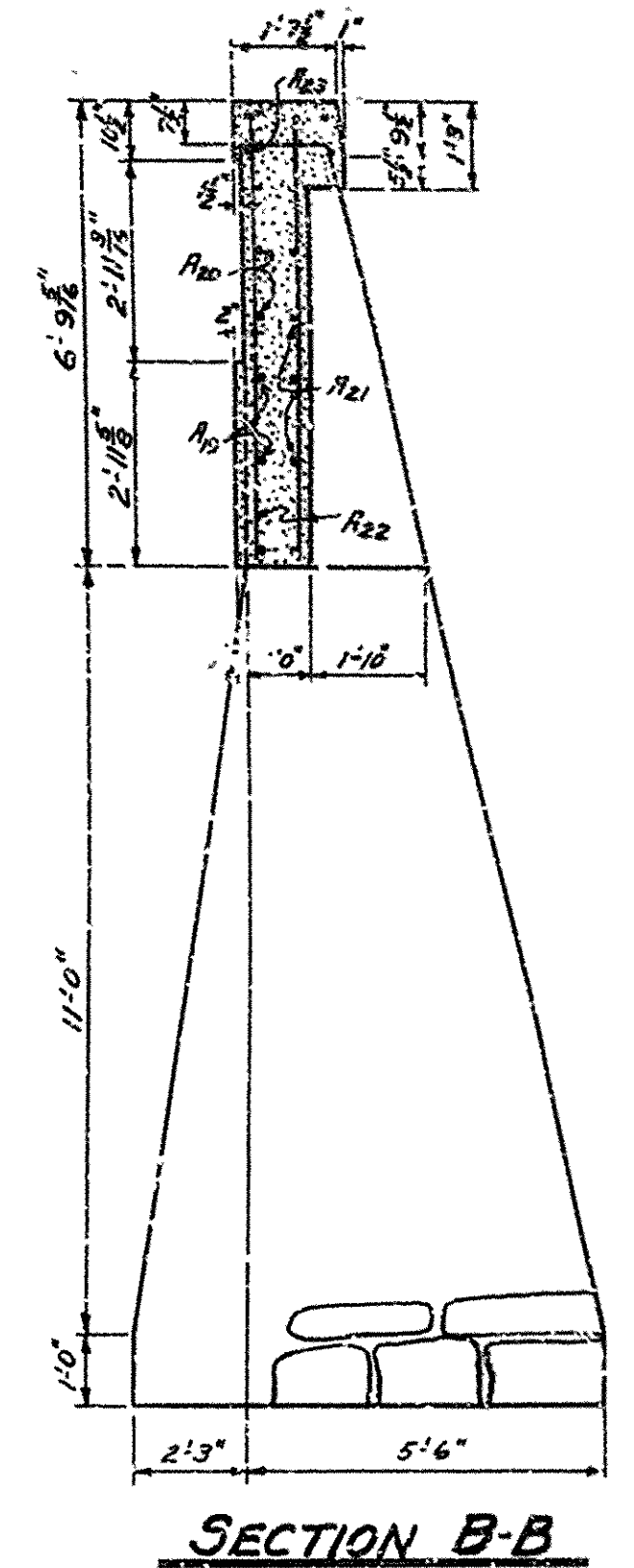
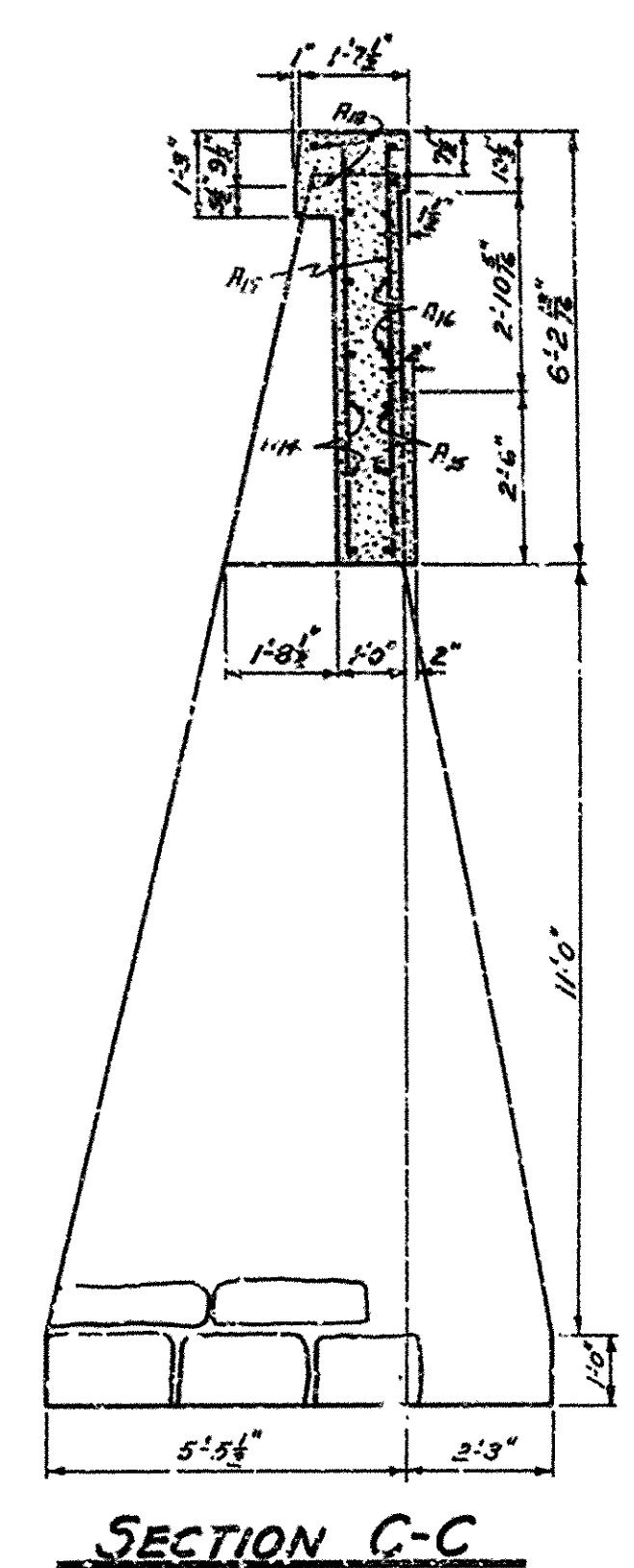
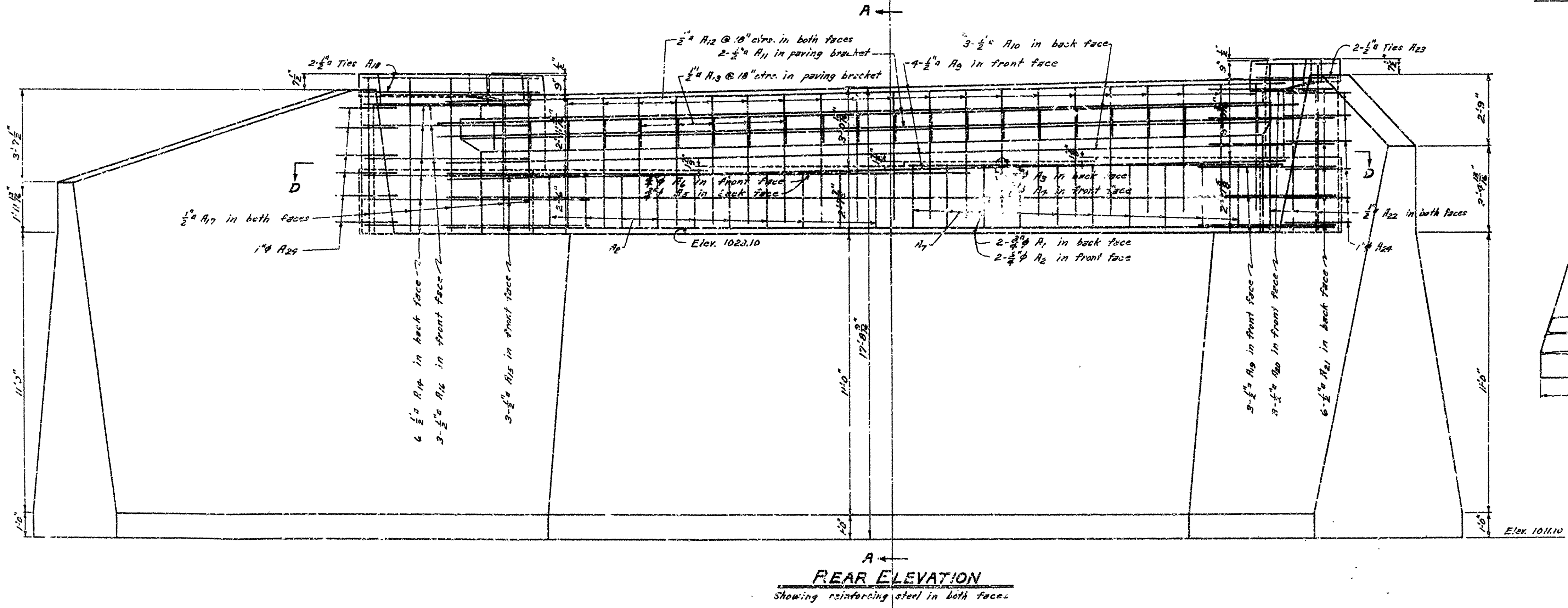
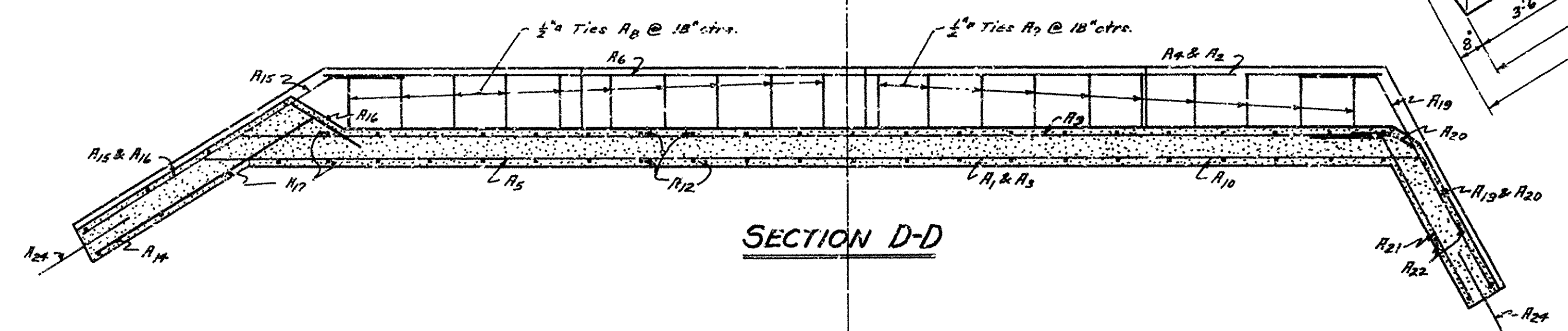
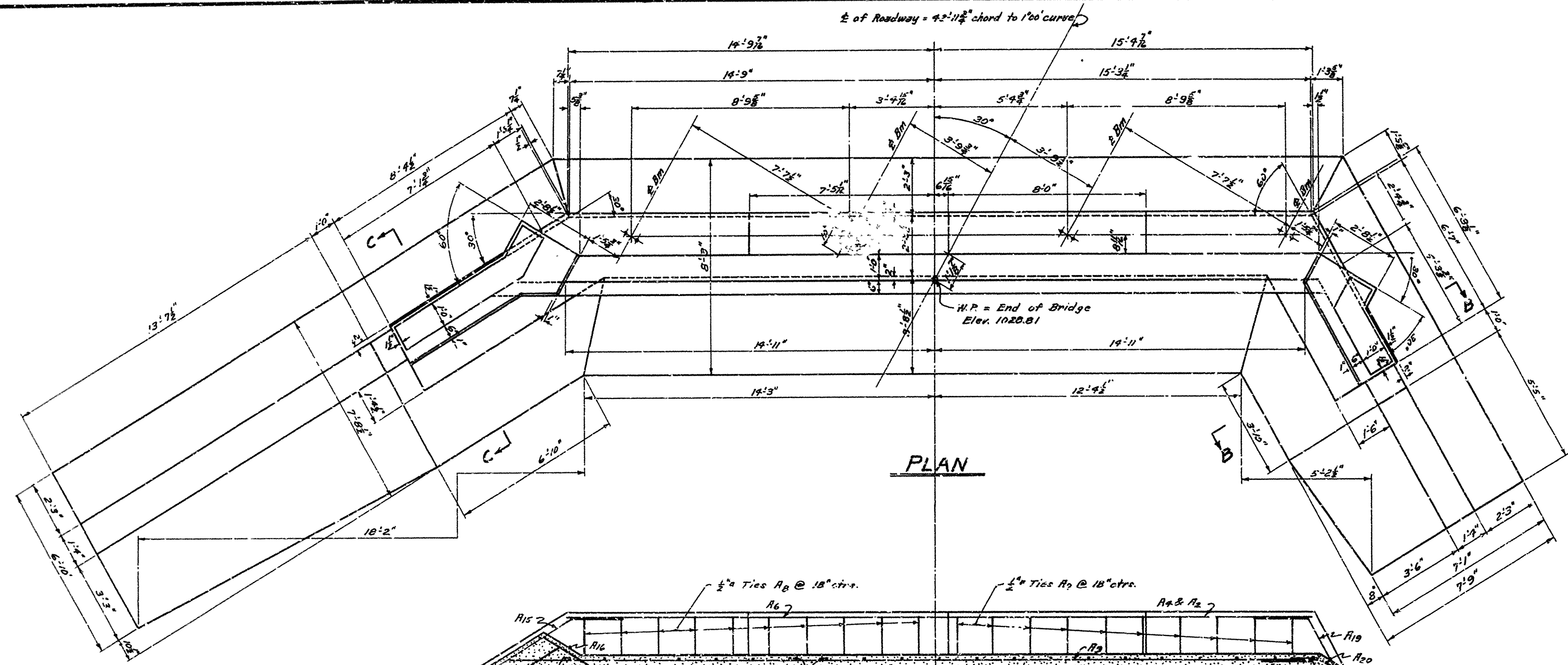
**SPECIAL NOTE:**

The 27" W@106" x 90" and a quantity of 16" x 12" I-Beams of various lengths are available for this job in stock piles at the Highway District Office at Fort Smith, Ark. All other structural metal may be obtained at other sources.

40'-0" I-BEAM SPAN  
30° R.F. SKEW 1° CURVE RT.  
BRIDGE OVER CEDAR CREEK  
SEBASTIAN CO.  
ROUTE 45 SEC. 1  
ARKANSAS STATE HIGHWAY COMMISSION  
LITTLE ROCK, ARK.  
Drawing No. 879-A DRAWING NO. 6277

*M. B. Lewis*  
PRINCIPAL HIGHWAY ENGINEER (BRIDGE)

FED. ROAD DIST. NO.	STATE	PROJECT NO.	FISCAL YEAR	SHEET NO.	TOTAL SHEETS
8	ARK.			3	5
STATE JOB NO. 4266					



**GENERAL NOTES**

All concrete to be Class 7. All exposed corners to be chamfered 3" unless otherwise noted. See Drawing No. 6276 for Bar-List and details of Turnout. For details of superstructure see Drawing No. 6277. For detail of sidewalk and roadway expansion devices see Drawing No. 6278.

DETAILS OF ABUTMENT NO.2  
 BRIDGE OVER CEDAR CREEK  
 HACKETT - NORTH ROAD  
 SEBASTIAN COUNTY  
 ROUTE 45 SEC. 1

ARKANSAS STATE HIGHWAY COMMISSION  
 LITTLE ROCK, ARK.

Drawn By: E.B.S. Date: 11-28-41  
 Traced By: H.C.H. Date: 11-28-41  
 Checked By: \_\_\_\_\_ Date: \_\_\_\_\_

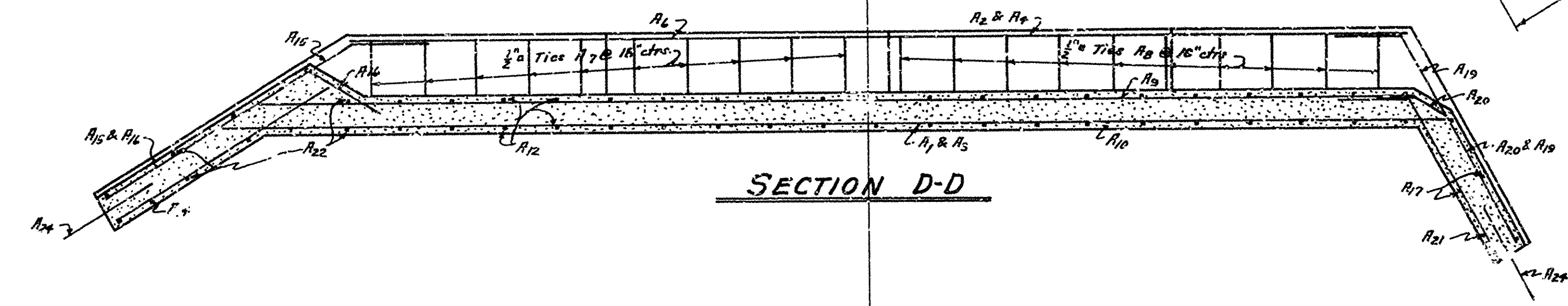
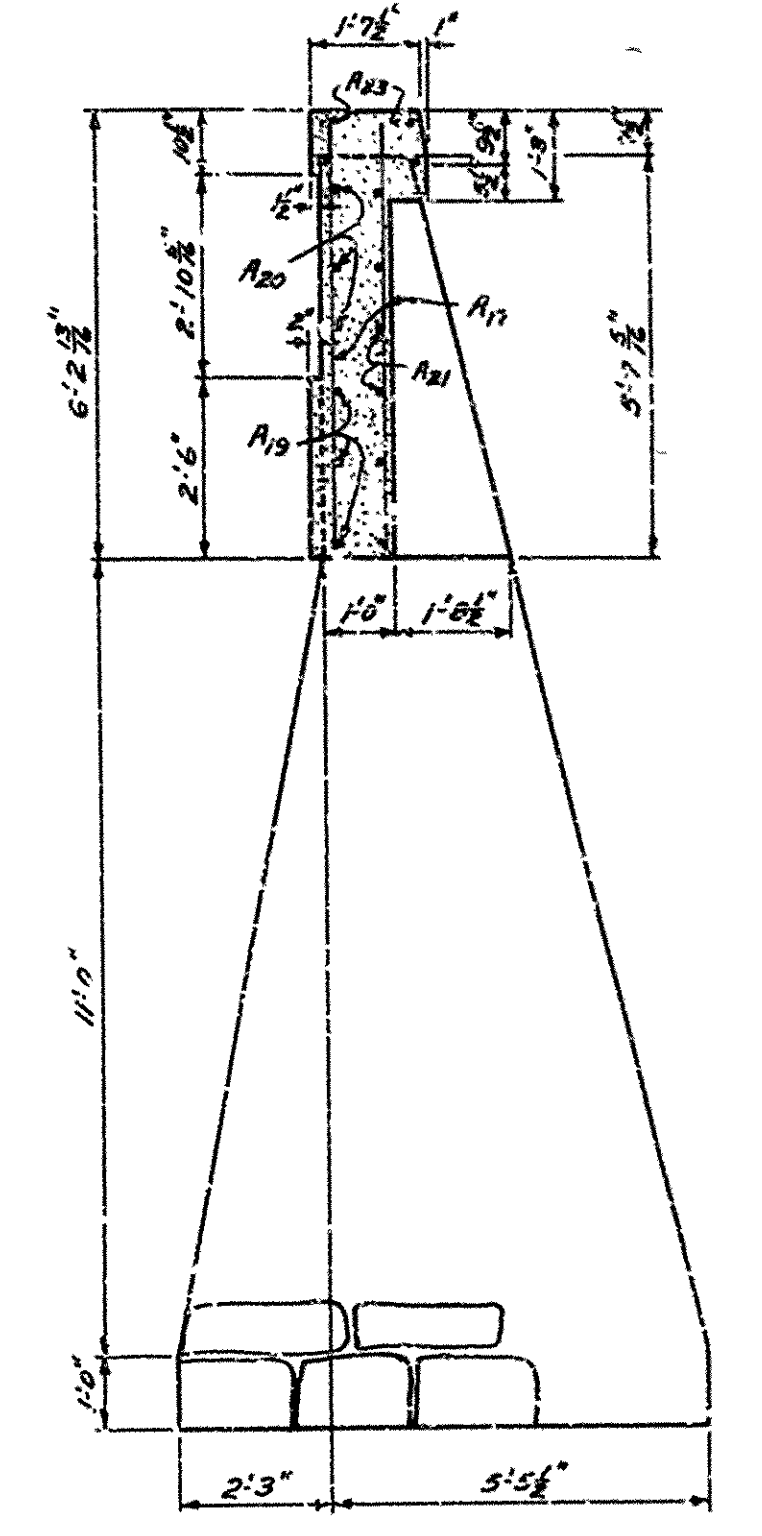
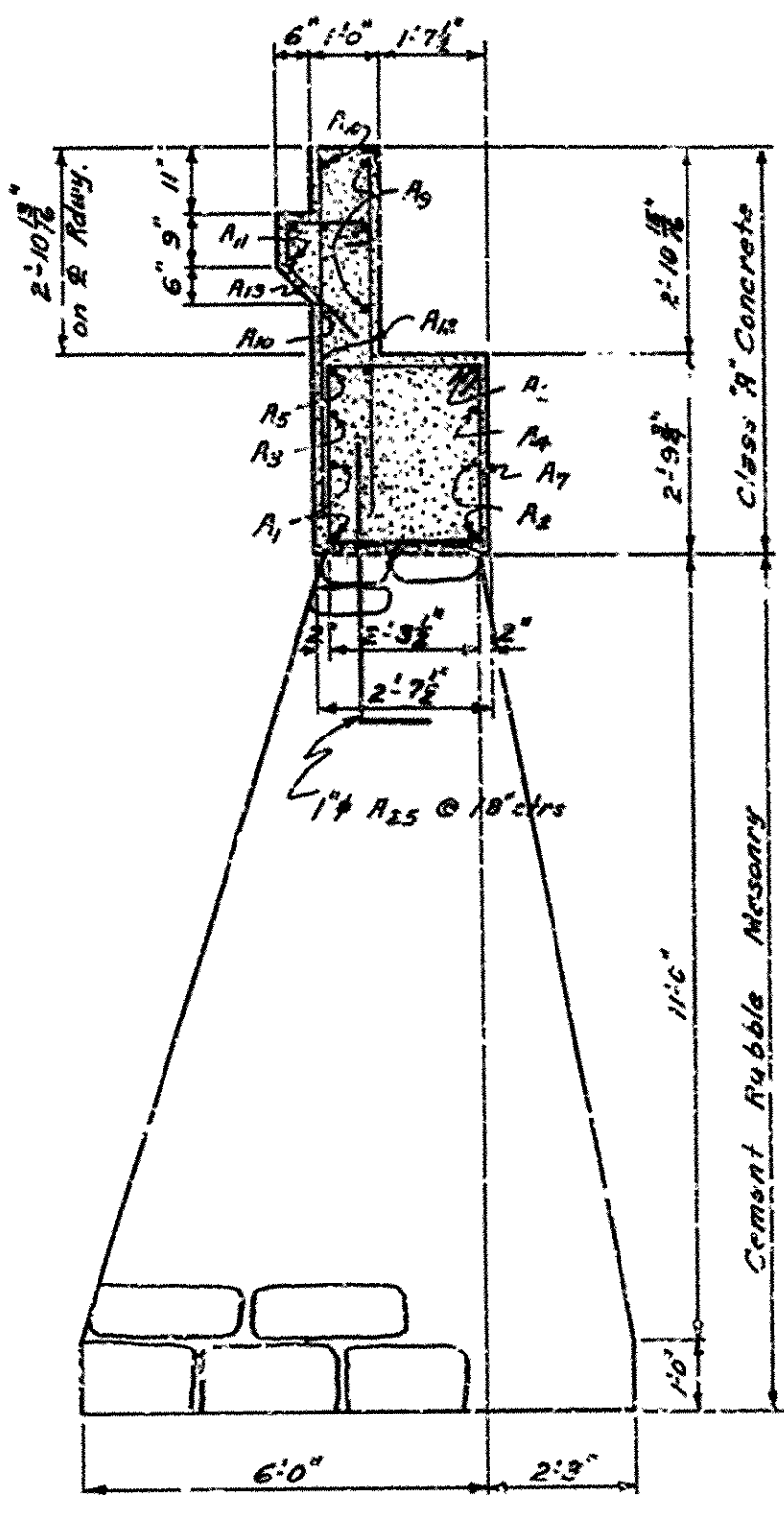
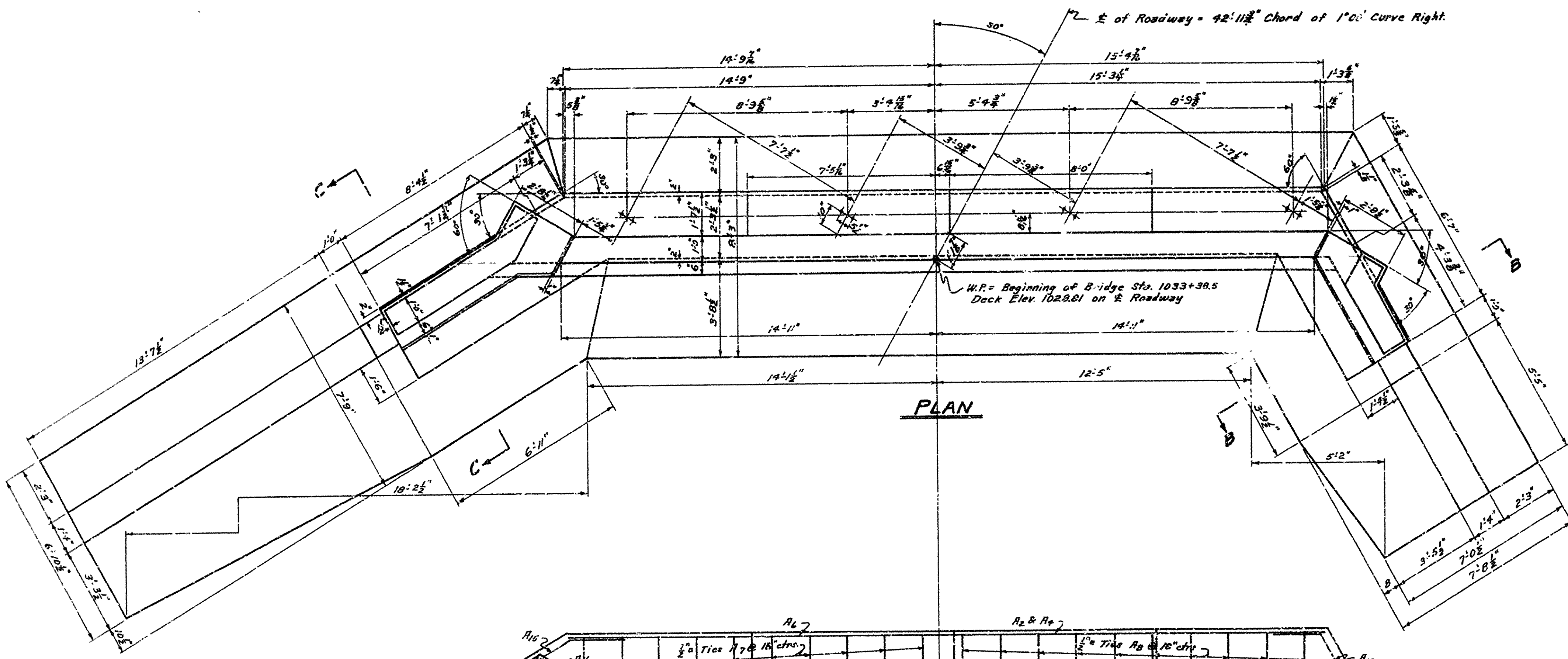
Scale: 3/8" = 1' ft

BRIDGE NO. 875-A DRAWING NO. 6275

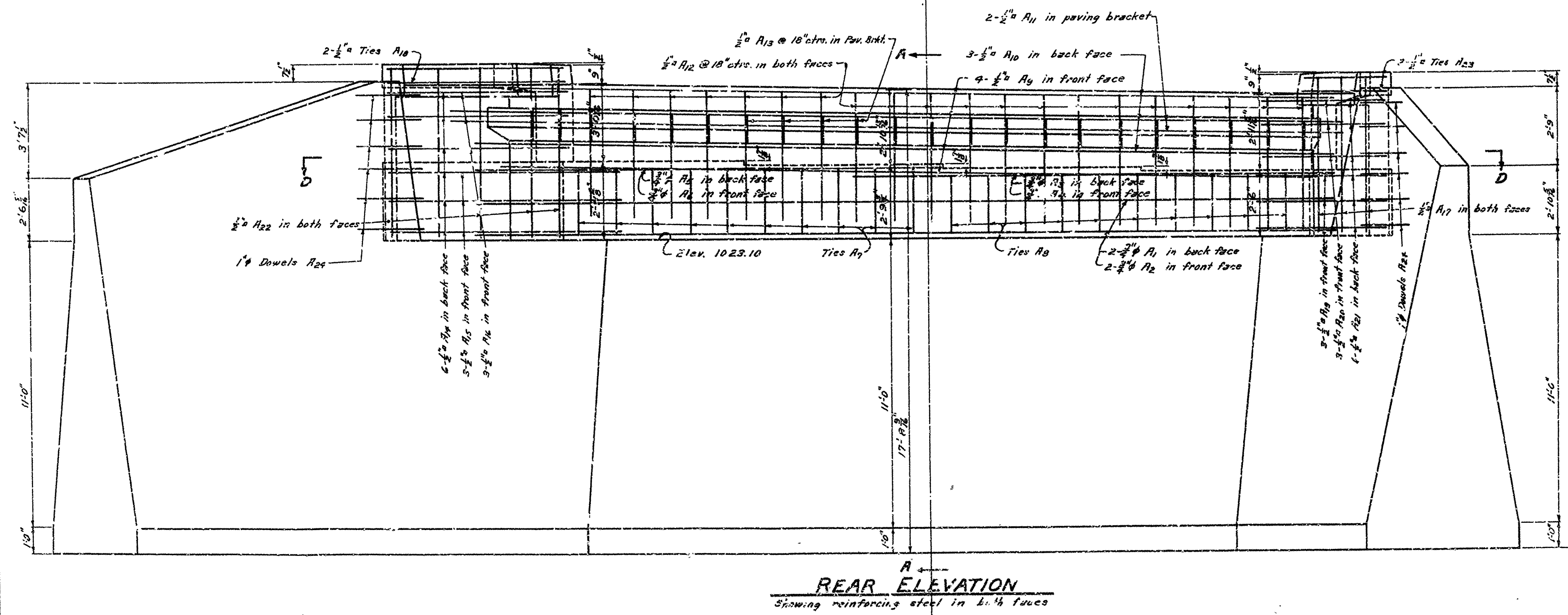
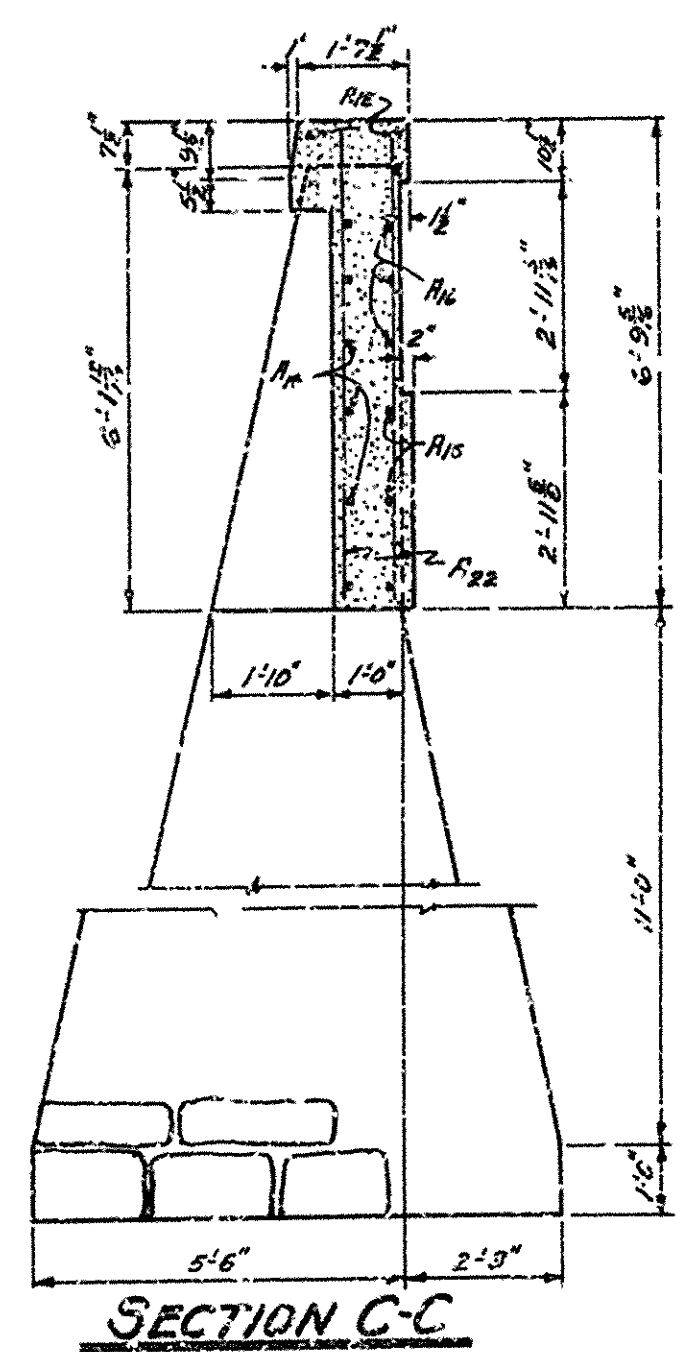
*M. O. Lewis*  
 PRINCIPAL HIGHWAY ENGINEER (SEAL)

P.C. ROAD DIST. NO.	STATE	PROJECT NO.	FISCAL YEAR	SHEET NO.	TOTAL SHEETS
6	ARK.			2	5

STATE JOB NO. 4266



**GENERAL NOTES**  
 All concrete to be Class "N".  
 All exposed concrete corners to be chamfered  $\frac{3}{8}$ " unless otherwise noted.  
 See Drawing No. 6276 for Bar List and detail of Turnouts.  
 For details of superstructure see Drawing No. 6277.  
 For detail of sidewalk and roadway expansion devices, see Drawg. No.



DETAILS OF ABUTMENT NO. 1  
 BRIDGE OVER CEDAR CREEK  
 HACKETT - NORTH ROAD  
 SEBASTIAN COUNTY  
 ROUTE 45 SEC. 1

ARKANSAS STATE HIGHWAY COMMISSION  
 LITTLE ROCK, ARK.

Drawn By: E.B.S. Date: 11-10-41  
 Traced By: W.C.H. Date: 11-26-41  
 Checked By: \_\_\_\_\_ Date: \_\_\_\_\_

Scale:  $\frac{3}{8}$  in. = 1 ft.

BRIDGE NO. 879-A DRAWING NO. 6274

M. C. H. WOODS  
 PRINCIPAL HIGHWAY ENGINEER (UNDOCS)

